

# Cleco

## IMPACT WRENCHES



**TOOL***impex*  
CZECH REPUBLIC s.r.o.

**Cleco** | Tame the Line

SHOWN: IMPACT WRENCH

# IMPACT WRENCHES

## TOUGH TOOLS. EASY CHOICE.

For over 120 Years, Cleco has exclusively supplied the global industrial market. Where other tools are born and bred for garages and tire shops, we make tools that are engineered and primed for the most grueling industrial environments.

Where other tools weaken, seize, or become difficult to repair, our tools will endure and keep on tackling your toughest challenges. Count on Cleco Industrial Air Impact Wrenches for TOUGH TOOLS. EASY CHOICE.



## MP2264B & MP2265B Series - Impact Wrench

Smooth and efficient impacting mechanism creates no reaction for the operator

- Smooth and efficient impacting mechanism creates no reaction for the operator
- One-hand forward reverse switch
- Rugged metal housing and components outlasts the competition
- Efficient and balanced design maximizes accessibility while minimizing operator fatigue
- 1/4" Quick Change or 3/8" Square with Pin Detent



Model	Torque Range Max		Blows Per Minute	Free Speed r/min	Air Consumption Scfm	Weight Lb	Drive Size in	Drive Type	Air Inlet Size in
	Ft Lb	Nm							
MP2264B	111	150	2000	10000	33	2.16	1/4 in	Hex Quick Change	1/4
MP2265B	111	150	2000	10000	33	2.16	3/8 in	Pin-Detent Square	1/4

## MP Series - Inline Impacting Driver

Smooth and efficient impacting mechanism creates no reaction for the operator

- Smooth and efficient impacting mechanism creates no reaction for the operator
- Inline to access certain applications with better ergonomics
- Rugged metal housing and components for long life
- Efficient and balanced design maximizes accessibility while minimizing operator fatigue



Model	Torque Range Max		Blows Per Minute	Free Speed r/min	Air Consumption Scfm	Weight Lb	Drive Size in	Drive Type	Air Inlet Size in
	Ft Lb	Nm							
MP2271	65	88.1	900	10500	22	2.2	3/8 in	Square	1/4

## CV Composite Series - Impact Wrench

Excellent combination of performance, comfort, and value

- Excellent combination of performance, comfort, and value
- Powerful twin hammer mechanism
- Variable speed trigger
- Light-weight and ergonomically balanced
- Ideal for general industrial production, maintenance, and overhaul.



Model	Torque Range Max		Brea-kaway Torque Ft Lb	Blows Per Minute	Free Speed r/min	Air Consumption Scfm	Weight Lb	Drive Size in	Drive Type	Air Inlet Size in
	Ft Lb	Nm								
CV-375P	420	569	510	1600	8000	32	2.91	3/8 in	Pin Anvil or Pin Hole	1/4
CV-375R	420	569	510	1600	8000	32	2.91	3/8 in	Retaining Ring	1/4
CV-500P	780	1058	1100	1200	8500	40.5	4.8	1/2 in	Pin Anvil or Pin Hole	1/4
CV-500R	780	1058	1100	1200	8500	40.5	4.8	1/2 in	Retaining Ring	1/4
CV-750P	1300	1763	1500	1000	5500	64	8.2	3/4 in	Pin Anvil or Pin Hole	3/8
CV-750P-8	1300	1763	1500	1000	5500	64	8.3	1 in	Pin Anvil or Pin Hole	3/8

## CWC Premium Composite Series - Impact Wrench

Ultimate combination of power, durability, and features

- Great combination of power, durability, and features
- Triple heat treated twin hammer mechanism
- Variable speed trigger
- User-preferred one-hand direction control
- Ideal for heavy industries and fast-paced production environments



Model	Torque Range Max		Brea-kaway Torque Ft Lb	Blows Per Minute	Free Speed r/min	Air Consumption Scfm	Weight Lb	Drive Size in	Drive Type	Air Inlet Size in
	Ft Lb	Nm								
CWC-250QC	50	68	75	1200	13000	19.5	1.9	1/4 in	Quick Change	1/4
CWC-250R	50	68	75	1200	13000	19.5	1.9	1/4 in	Retaining Ring	1/4
CWC-375P	450	610	550	1600	10000	37.5	2.91	3/8 in	Pin Anvil or Pin Hole	1/4
CWC-375R	450	610	550	1600	10000	37.5	2.91	3/8 in	Retaining Ring	1/4
CWC-375R-4	450	610	550	1600	10000	37.5	2.91	1/2 in	Retaining Ring	1/4
CWC-500P	800	1085	1180	1250	8000	40.5	4.41	1/2 in	Pin Anvil or Pin Hole	1/4
CWC-500R	800	1085	1180	1250	8000	40.5	4.41	1/2 in	Retaining Ring	1/4
CWC-750P	1400	1898	1800	1200	6500	69	7.6	3/4 in	Pin Anvil or Pin Hole	3/8

## CWM Metal Housing Series - Impact Wrench

Engineered to outperform the competition in the harshest environments

- Engineered to outperform the competition in the harshest environments
- Triple heat treated twin hammer mechanism
- Variable speed trigger
- Durable all-metal housing
- Ideal for heavy industries and demanding environments



Model	Torque Range Max		Brea-kaway Torque Ft Lb	Blows Per Minute	Free Speed r/min	Air Consumption Scfm	Weight Lb	Drive Size in	Drive Type	Air Inlet Size in
	Ft Lb	Nm								
CWM-375P	340	450	450	1400	12000	26.9	3.31	3/8 in	Pin Anvil or Pin Hole	1/4
CWM-375R	340	450	450	1400	12000	26.9	3.31	3/8 in	Retaining Ring	1/4
CWM-500P	850	1200	1200	1200	9000	39.8	5.8	1/2 in	Pin Anvil or Pin Hole	1/4
CWM-500R	850	1200	1200	1200	9000	39.8	5.8	1/2 in	Retaining Ring	1/4
CWM-750P	1350	2339	1725	1200	6000	54	10.4	3/4 in	Pin Anvil or Pin Hole	3/8

# Cleco

## PULSE TOOLS



**Cleco** | Tame the Line

SHOWN: H SERIES PISTOL GRIP

# PULSE TOOLS

**DURABLE.  
ECONOMICAL.  
LOW MAINTENANCE.**

Cleco Pulse Tools are a proven solution for higher torque applications.

Durable by design with market leading repeatability on hard and soft joints.

The high rundown speed, excellent power to weight ratio and low vibration make these the ergonomic tool of choice.





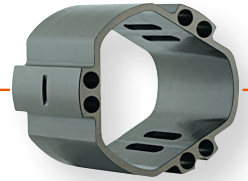
**Outstanding Ergonomics**

Leading motor design combined with new body development provides exceptional biotechnology. Less vibrations allow for greater operator comfort.



**Powerful and Efficient 3-Chamber Air Motor**

With speed governor and oilless blades. Reduces tightening time with increased torque. Unique design reduces blade wear and lowers total cost of ownership.



3-Chamber Motor Housing



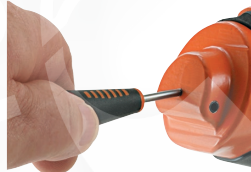
**50% Lower Air Consumption @ Free-Speed**

Innovative centrifugal speed control does not release the entire capacity before run down has ended. Enables operation to as low as 4 bar. Lower air consumption drives lower cost of ownership.



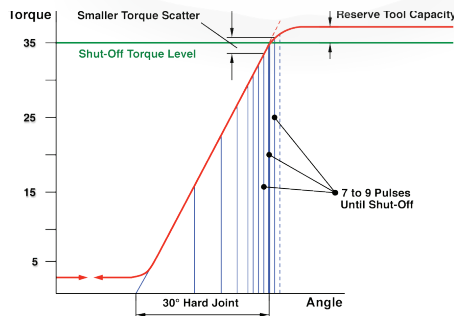
**Easy Torque Set-Up**

Simply insert hex into rear port of tool.



**High-Precision Shut-Off**

Mechanism ranges close to electric tool characteristics at a tolerance of +/- 10% at Six Sigma.



Hard Joint Reference



**Easily Adjustable Motor Speed**

Ensures accuracy on hard joints. Can be locked into place to prevent accidental modification.



**Reduced Tool Maintenance**

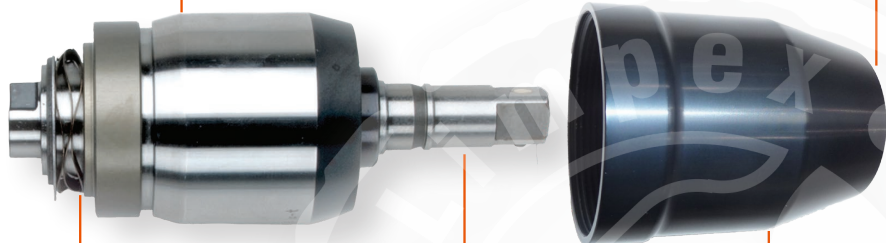


Double-chambered pulse unit with built-in automatic oil reserve. Up to 500.000 cycles before the first service.

**Pulse Unit** Delivers market-leading repeatability for hard and soft joints.



Drive Spindle Bearing



Automatically Activated Expansion Chamber

Anti-Wobble Socket

Drive Spindle Bearing Support





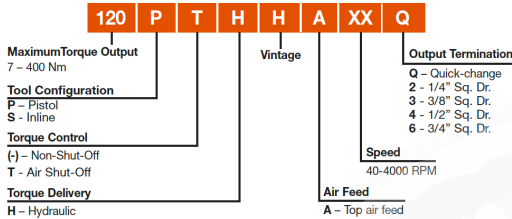
## H Series 2.9-88ftlb/ 4-120Nm - Pistol Grip - Shut-Off

Market leading repeatability unmatched accuracy, low maintenance, inertia shut-off, low noise level, efficient 3 chamber air motor, external speed control, oil less blades reversible torque signal port

- Durable, Economical low maintenance
- Adaptor 935472 available 3/8" Square to 7/16" Quick Change



**Model Number Nomenclature**



Model	Output Drive	Torque Range				Free Speed r/min	Weight Lb	Air Consumption		
		Min Ft Lb	Max Ft Lb	Min Nm	Max Nm			NPT	Hose I.D.	Scfm
7PTHH35Q	1/4" Quick Change	2.95	5.2	4	7	3500	1.74	1/4	3/8	7.06
11PTHH353	3/8" Square Drive	4.43	8.1	6	11	3500	1.83	1/4	3/8	7.06
11PTHH35Q	1/4" Quick Change	4.43	8.1	6	11	3500	1.87	1/4	3/8	7.06
20PTHH403	3/8" Square Drive	7.4	14.8	10	20	4000	1.9	1/4	1/2	8.70
20PTHH40Q	1/4" Quick Change	7.4	14.8	10	20	4000	1.92	1/4	1/2	8.70
35PTHH403	3/8" Square Drive	14.8	25.8	20	35	4000	2.45	1/4	1/2	15.90
35PTHH40Q	1/4" Quick Change	14.8	25.8	20	35	4000	2.31	1/4	1/2	15.90
35PTHHA403	3/8" Square Drive	14.8	25.8	20	35	4000	2.45	1/4	1/2	15.90
55PTHH403	3/8" Square Drive	22.1	40.6	30	55	4000	2.54	1/4	1/2	15.90
55PTHHA403	3/8" Square Drive	22.1	40.6	30	55	4000	2.67	1/4	1/2	15.90
80PTHH354	1/2" Square Drive	36.9	59	50	80	3500	3.09	1/4	3/8	19.40
80PTHHA354	1/2" Square Drive	36.9	59	50	80	3500	3.31	1/4	3/8	19.40
120PTHH304	1/2" Square Drive	55	89	75	120	3000	3.75	3/8	1/2	19.40
120PTHHA304	1/2" Square Drive	55	89	75	120	3000	3.86	3/8	1/2	19.40

7/16" Quick Change Chuck available separately as an accessory

## H series - 2.9-88ftlbs / 4-120Nm Pistol Grip - Non Shut-Off

Durable, Economical low maintenance low noise levels efficient air motor external speed control, external speed control, oil less blades reversible

- Durable, Economical low maintenance
- Adaptor 935472 available 3/8" Square to 7/16" Quick Change



Model	Output Drive	Torque Range				Free Speed r/min	Weight Lb	Air Consumption		
		Min Ft Lb	Max Ft Lb	Min Nm	Max Nm			NPT	Hose I.D.	Scfm
7PHH60Q	1/4" Square Drive	2.95	5.2	4	7	6000	1.74	1/4	3/8	8.7
11PHH653	3/8" Square Drive	4.43	8.1	6	11	6500	1.74	1/4	3/8	10.5
11PHH65Q	1/4" Square Drive	4.43	8.1	6	11	6500	1.76	1/4	3/8	10.5
20PHH753	3/8" Square Drive	7.4	14.8	10	20	7500	1.85	1/4	3/8	17.3
20PHH75Q	1/4" Square Drive	7.4	14.8	10	20	7500	1.9	1/4	3/8	17.3
35PHH653	3/8" Square Drive	14.8	25.8	20	35	6500	2.25	1/4	3/8	19.4
35PHH65Q	1/4" Square Drive	14.8	25.8	20	35	6500	2.29	1/4	3/8	15.9
55PHH603	3/8" Square Drive	22.1	40.6	30	55	6000	2.47	1/4	3/8	22.9
80PHH604	1/2" Square Drive	36.9	59	50	80	6000	3.09	1/4	3/8	26.5
120PHH554	1/2" Square Drive	55	89	75	120	5500	3.64	3/8	1/2	30

7/16" Quick Change Chuck available separately as an accessory

## C Series - High Torque 74-295ftlbs / 100-400Nm - Pistol Grip - Non-Shut-off

Durable, Economical low maintenance low noise levels efficient air motor external speed control, oil less blades reversible

- Durable, Economical low maintenance



Model	Output Drive	Torque Range				Free Speed r/min	Weight Lb	Air Consumption		
		Min Ft Lb	Max Ft Lb	Min Nm	Max Nm			NPT	Hose I.D.	Scfm
160PH456	3/4" Square Drive	74	118	100	160	4500	5.7	3/8	1/2	31.7
250PHF406	3/4" Square Drive	118	185	160	250	4000	8.6	3/8	1/2	40.6
400PHF356	3/4" Square Drive	185	295	250	400	3500	11.5	3/8	1/2	42.3

## C Series 74-295ftlbs / 100-400Nm - Pistol Grip - Shut-Off

Durable, Economical low maintenance low noise levels, external speed control efficient air motor reversible torque signal port

- Durable, Economical low maintenance



Model	Output Drive	Torque Range				Free Speed r/min	Weight Lb	Air Consumption		
		Min Ft Lb	Max Ft Lb	Min Nm	Max Nm			NPT	Hose I.D.	Scfm
160PTHC256	3/4" Square Drive	74	118	100	160	2500	5.7	3/8	1/2	25.4
250PTHFC226	3/4" Square Drive	118	185	160	250	2200	8.8	3/8	1/2	33.5
400PTHFC206	3/4" Square Drive	185	295	250	400	2000	11.7	3/8	1/2	33.5

## C Series 1.9-25.8ftlbs / 2.6-35Nm - In-Line - Shut Off

Durable, Economical low maintenance low noise levels, external speed control, efficient air motor, reversible, torque signal port



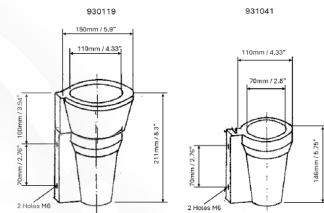
- Durable, Economical low maintenance

Model	Output Drive	Torque Range				Free Speed r/min	Weight Lb	Air Consumption		
		Min Ft Lb	Max Ft Lb	Min Nm	Max Nm			NPT	Hose I.D.	Scfm
15STHC40Q	1/4" Quick Change			5	15	3000	2.43	1/4	3/8	0.1
15STHFC40Q	1/4" Quick Change	3.6	11	5	15	4000	2.43	1/4	3/8	0.1
35STHFC404	1/2" Square Drive	12	26	12	35	4000	3.31	1/4	3/8	1.5
35STHFC40Q	7/16" Quick Change	12	26	15	35	4000	3.31	1/4	3/8	1.5
7STHFC55Q	1/4" Quick Change	1.9	4.9	2.6	6.6	5500	2.05	1/8	3/8	7

## Pulse Tools - Rubber Tool Stand

Rubber tool stand for pulse tools.

- Rubber tool stand provides protection for tool when not in use
- Two sizes - 931041 70mm opening, 930119 110mm opening
- Mounting holes to attach to work benches 2 x M6 on 70mm centers



Model	Description
930119	For Tool Series 7PTH-120PTH
931041	For Tool Series 140/160/250/400

## Pulse Tools - 7/16" Quick Change Chuck Adapter

Converts to quick-change chuck

- Adapts 3/8" Square to 7/16" Quick Change



Model	Description
935472	Adapts 3/8" Square to 7/16" Quick Change

## Pulse Tools - Vibration Absorber



Model	Description
935965	For Tool Series 35/55
935966	For Tool Series 80/110/120

## Pulse Tools - Covers



Model	Description
937442PT	For Tool Series 7/11/20PTHHA/PHHA
937443PT	For Tool Series 35PTHHA/PHHA
937444PT	For Tool Series 55PTHHA/PHHA
937445PT	For Tool Series 80PTHHA/PHHA
937446PT	For Tool Series 110/120PTHHA/PHHA
937447PT	For Tool Series 7/11/20PTHHA/PHHA
937448PT	For Tool Series 35PTHH/PHH
937449PT	For Tool Series 55PTHH/PHH
937450PT	For Tool Series 80PTHH/PHH
937451PT	For Tool Series 110/120PTHH/PHH